



PET life™



(Scan the QR code for a free webinar!)

Fully Quantitative Canine Pancreatic Specific Lipase (cPL) in Clinic

Don't settle for guesswork when you can have quantitative results!

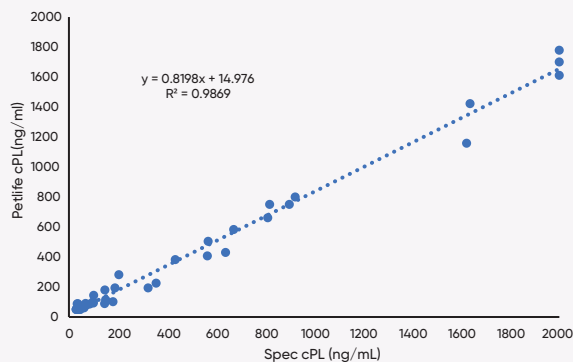
Stay ahead of Pancreatitis. Having to send samples out for laboratory testing can be time-consuming and impact the quality of care. Petlife Fully Quantitative cPL can be performed immediately in your clinic empowering you to provide prompt and effective care.

Reliable quantitative cPL testing brings clarity and confidence to your point-of-care treatment plan.

- Get fully quantitative results in 10 mins with 10 uL sample.
- Develop a treatment plan during the same visit.
- Monitor responses to therapy more effectively.
- No more subjective interpretation of color intensity.
- No contract policy. Say goodbye to long-term commitments and hello to flexibility.



37 serum samples from dogs with or without symptoms of pancreatitis were analyzed. There was an almost perfect agreement between the Spec cPL and PETlife cPL, with an R2 value of 0.98.



Comparison of the results from Spec cPL and PETlife cPL.

	Spec cPL	PETlife cPL
<200 mg/L (Normal)	20	20
200~400 mg/L (Elevated)	3	3
>400 mg/L (Consistent with Pancreatitis)	14	14

Values obtained below 30 ng/mL and 50 ng/mL were considered as 30 ng/mL and 50 ng/mL in Spec cPL and PETlife cPL, respectively. Additionally, values above 2,000 ng/mL in Spec cPL and PETlife cPL were considered as 2,000 ng/mL.



PET life™

*Supporting today's veterinary needs,
Solving tomorrow's challenges.
Rapid point-of-care pet testing with
no contracts!*

Immunofluorescence Analyzer

The PETlife™ Immunofluorescence Analyzer is designed with you in mind, offering reliable results quickly. FineCare's advanced technology is packaged in an easy-to-use format, reducing manual errors with a self-calibrating system that delivers simple digital test results, with an option to print to avoid transcription errors.

Fast and Convenient

Get rapid results to meet your timeline, with most assay results available in under 15 minutes.

Simple and Flexible

The analyzer is easy to use with on-demand training. Simply add the sample to the cassette, insert it into the analyzer, and read the result.

No Contract Policy

Get the tests you need without being tied down.

Accessibility

We have a warehouse in Toronto and offer same-day shipping for supplies.



Test Menu

Cat. No.	Test Item	Specification	Sample Type	Sample Volume	Reaction Time	Linear Range	Reference Range
VIF-CPROG-US	Canine Prog (cProg) Serum/plasma version	10 T/kit	Serum/plasma	75 µL	15 min	1~50 ng/mL (3.18~159 nmol/L)	15~30 ng/ml (35~80nmol/L)
VIF-CPL	cPL	10 T/kit	Whole blood /Serum/plasma	10 µL	10 min	50~2000 µg/L	<200 µg/L
VIF-FPL	fPL	10 T/kit	Whole blood /Serum/plasma	75 µL	15 min	0.5~50 µg/L	<3.5 µg/L
VIF-CORT	Cortisol	10 T/kit	Whole blood /Serum/plasma	75 µL	15 min	10~1000 nmol/L (0.36~36.23 µg/dL)	16.6~166 nmol/L (0.6~6.01 µg/dL)
VIF-A1C	HbA1c	10 T/kit	Whole blood	10 µL	5 min	3%~14.5%	3%~4.5%
VIF-CRP	Canine CRP (cCRP)	10 T/kit	Whole blood /Serum/plasma	10 µL	3 min	2~250 mg/L	0~10 mg/L
VIF-CNT-PROBNP	Canine NT-proBNP	10 T/kit	Serum/plasma	75 µL	10 min	150~6000 pmol/L	<800 pmol/L
VIF-FNT-PROBNP	Feline NT-proBNP	10 T/kit	Serum/plasma	75 µL	10 min	50~1000 pmol/L	< 150 pmol/L
VIF-DDIMER	D-Dimer	10 T/kit	Whole blood /plasma	15 µL /10 µL	5 min	100~10000 ng/mL	< 250 ng/mL
VIF-FSAA	Feline SAA (fSAA)	10 T/kit	Whole blood /Serum/plasma	10 uL	3 min	2~300 mg/L	0~8mg/L
VIF-CcTnI	Canine Cardiac Troponin I (c-cTnI)	10 T/kit	Serum/plasma	75 µL	15 min	0~30 ng/mL	< 0.3 ng/mL
VIF-FcTnI	Feline Cardiac Troponin I (f-cTnI)	10 T/kit	Serum/plasma	75 uL	15 min	0~30 ng/mL	< 0.3 ng/mL

Rel: 2024/07/29