



SAFE life™

Mobile Hair Processor

Where Every Strand Holds the Key to a Safer Tomorrow!

When it is important to identify long-term drug use quickly, there is no better choice than SAFElife™ Mobile Hair Processor. Designed for on-site testing, you can choose from a comprehensive list of 18 drug tests with an impressive **above 95% accuracy rate to the gold standard LC-MS/MS testing**. No more waiting for negative results – send only positive samples for confirmation, saving time and costs.

SAFElife Mobile Hair Processor and Tests

- * Results at 5 min
- * E&I testing and Forensic Use Only testing panels
- * Choose from a comprehensive menu of 18 accurate and reliable drug tests
- * Customizable panel options
- * Private and observed sample collection for enhanced privacy
- * Minimizes the risk of adulteration, ensuring result reliability
- * Captures long-term drug use history



Available drug test menu with customizable panel options.

Maximum panel size: 12-panel test.

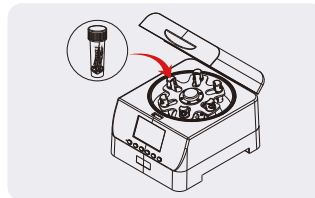
- 6-Monoacetylmorphine (6-MAM)
- Amphetamines (AMP)
- Benzoylcegonine (BE)
- Barbitol (BAR)
- Buprenorphine (BUP)
- Benzodiazepines (BZO)
- Cocaine (COC)
- Fentanyl (FTY)
- Synthetic Marijuana (K2)
- Ketamine (KET)
- Methylenedioxyamphetamine (MDMA)
- Methamphetamine (MET/mAMP)
- Methadone (MTD)
- Opiates (OPI)
- Oxycodone (OXY)
- Phencyclidine (PCP)
- Tramadol (TRA)
- Marijuana (THC)

Workflow

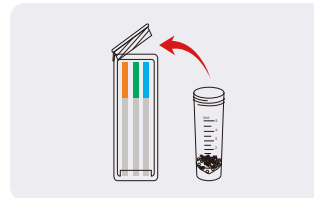
Efficient. Accurate. On-site simplicity for drug testing confidence.



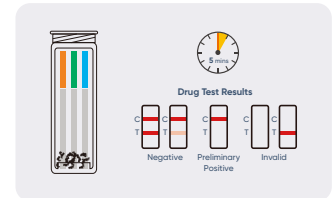
Collect hair samples, place them into the processing tube, and screw the cap.



Insert the processing tube into the SAFElife™ Hair Test Analyzer and press the start button.



After 130 seconds, remove the processing tube. Wait for 3 minutes to cool down and pour its contents into the testing cup.



Read the results between 5 to 10 minutes.

Item Code	Description	Complexity
QHDOA-1108	10-Panel Safelife Hair Test; AMP,BAR,BUP,BZO,COC,FTY,MAMP,OPI,OXY,PCP	Forensic Use Only
QHDOA-128-THC	2-Panel Safelife Hair Test THC 100 and 200 cut-off	Forensic Use Only